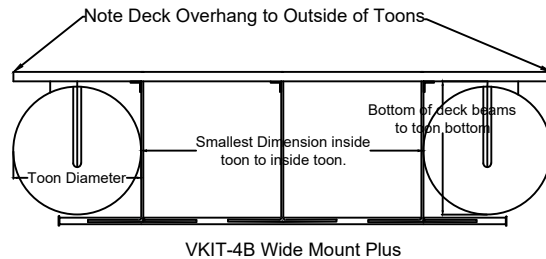


This configuration requires some trailer modification, including but not limited to, cutout or "window" of trailer bunks around foil storage area and removal of any inside guides or interference of foil entry onto your storage support/s. Guides on the outside of trailer are recommended as shown in link at [https://www.youtube.com/watch?v=zO6KAW\\_nwx8](https://www.youtube.com/watch?v=zO6KAW_nwx8). Please Call PHA with any further questions you may have.



**INFORMATION NEEDED FOR ORDER:**

- Print clearly and ledgebly beside indicated measurements needed on pictorial form above actual measurements you take within  $\frac{1}{4}$ " accuracy remembering at minimum to double check your form and measurements.
- Provide 1 clear picture from each side of boat that includes entire view of boat from that angle ( 4 total ).
- Provide 1 clear picture of view inside boat from front of boat that includes entire view of interior. (1)
- Provide 1 clear picture of view under boat from front end that includes view of deck beams, toons, trailer/lift. (1)
- Indicate whether the deck underside is bare beams ( Stock) on underbody or whether there is an underskin that is smooth installed ( Beams cant be seen).

